

Partial

# Teardown



S-715i Full Unit

Image Credit: Engadget

## Teardown Information

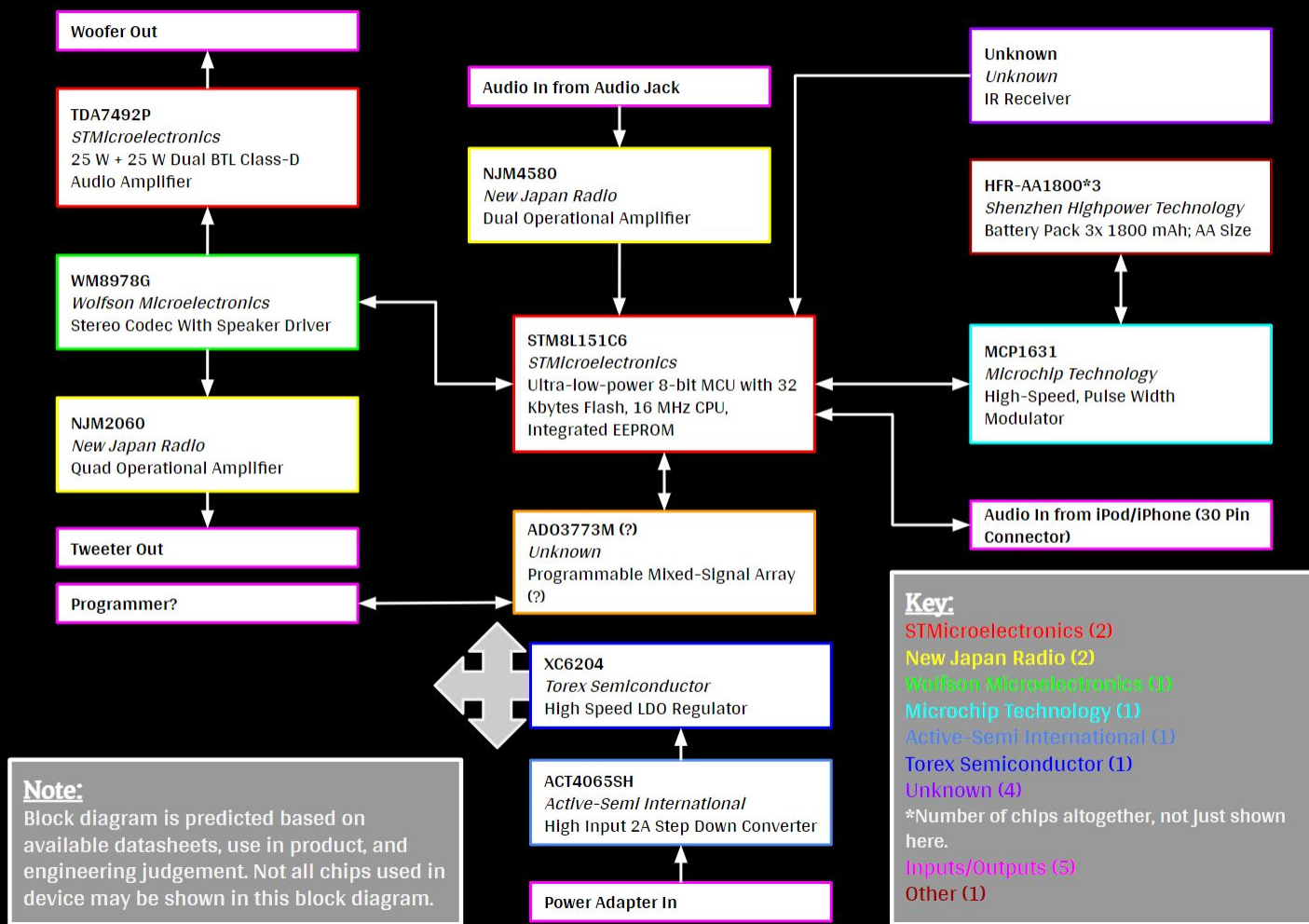
### Post Information

Teardown Date	Unknown
Posted Date	July 11, 2020

### Device Information

Device Type	Speaker
Brand	Logitech
Model	S-715i
Retail Price	\$149
Release Date	July 9, 2010
Connectivity	iPhone/iPod 30 pin connector; 3.5 mm audio jack; IR Remote (Not included in Teardown)
Battery	3.6v NiMH

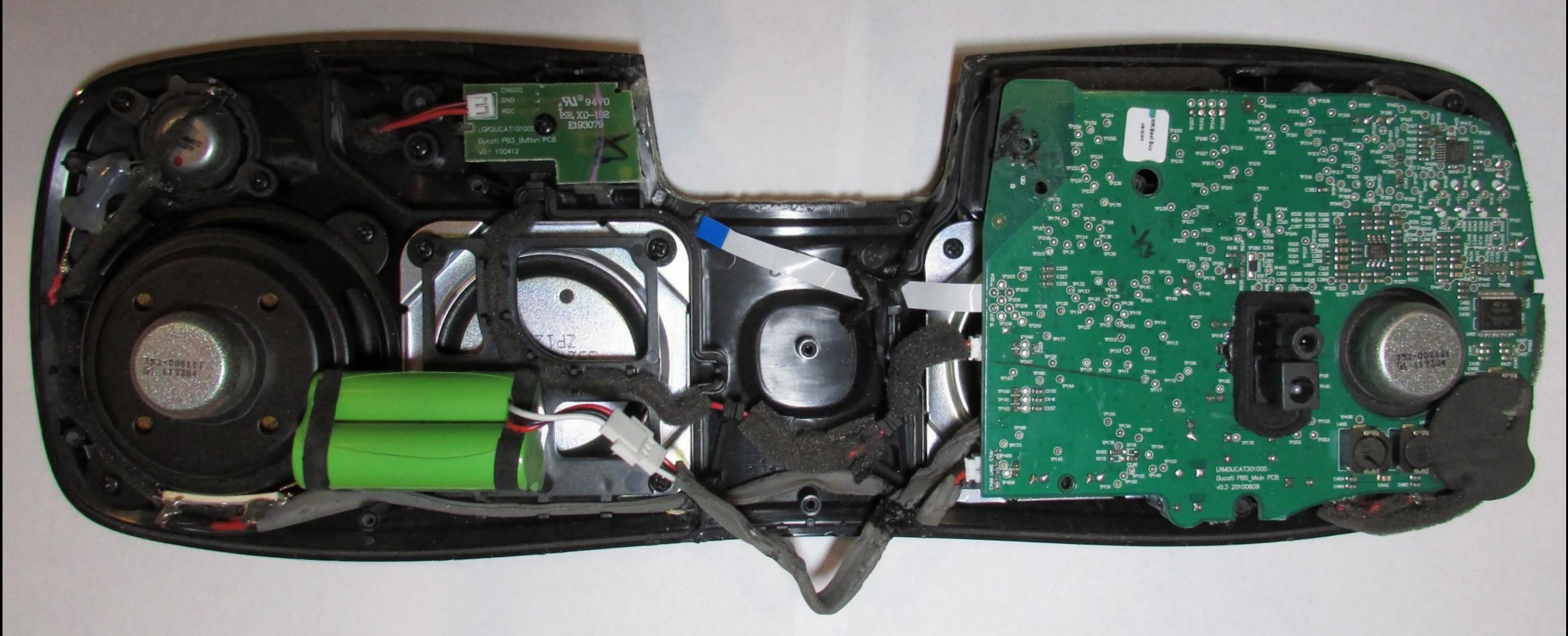
**Note:** All pictures are taken by me unless noted otherwise.



# Logitech S-715i Design Wins

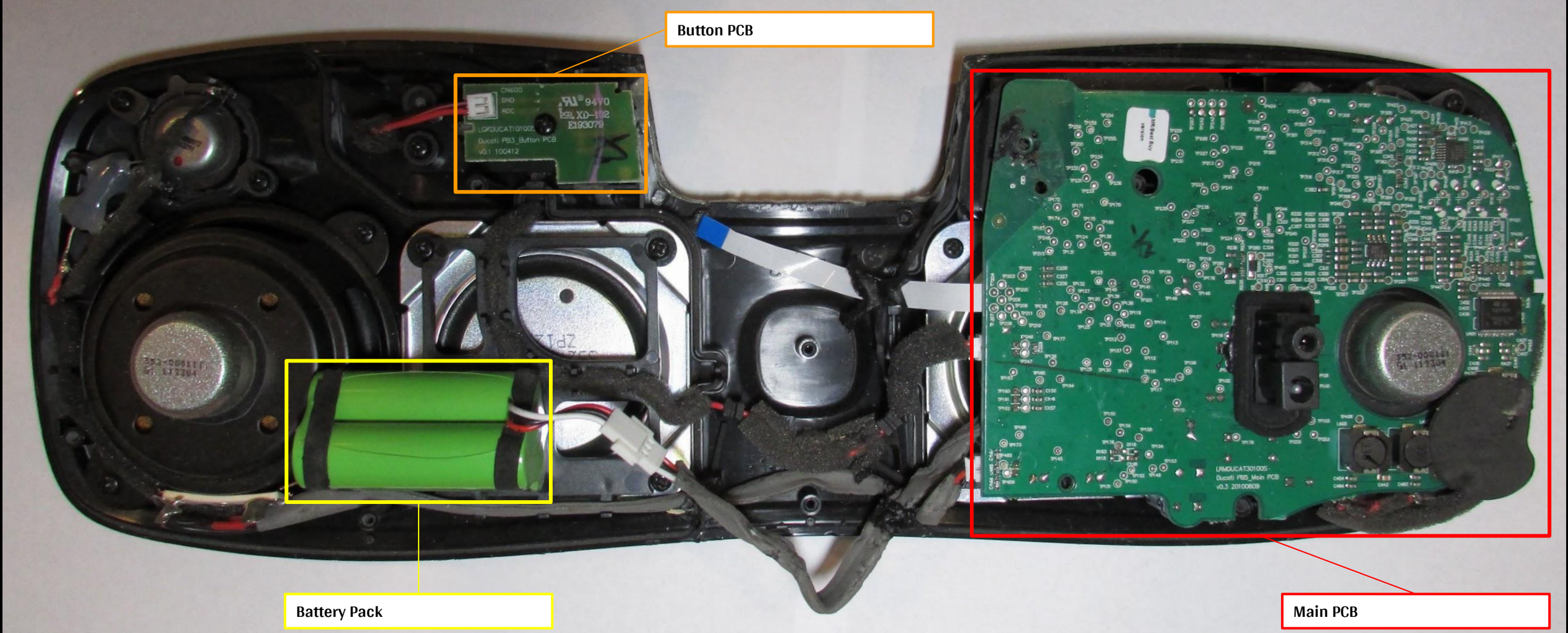
Purpose	Manufacturer	Chip Part Number
Microcontroller	STMicroelectronics	STM8L151C6
Audio Codec	Wolfson Microelectronics	WM8978G
Audio Amplifier	STMicroelectronics	TDA7492P



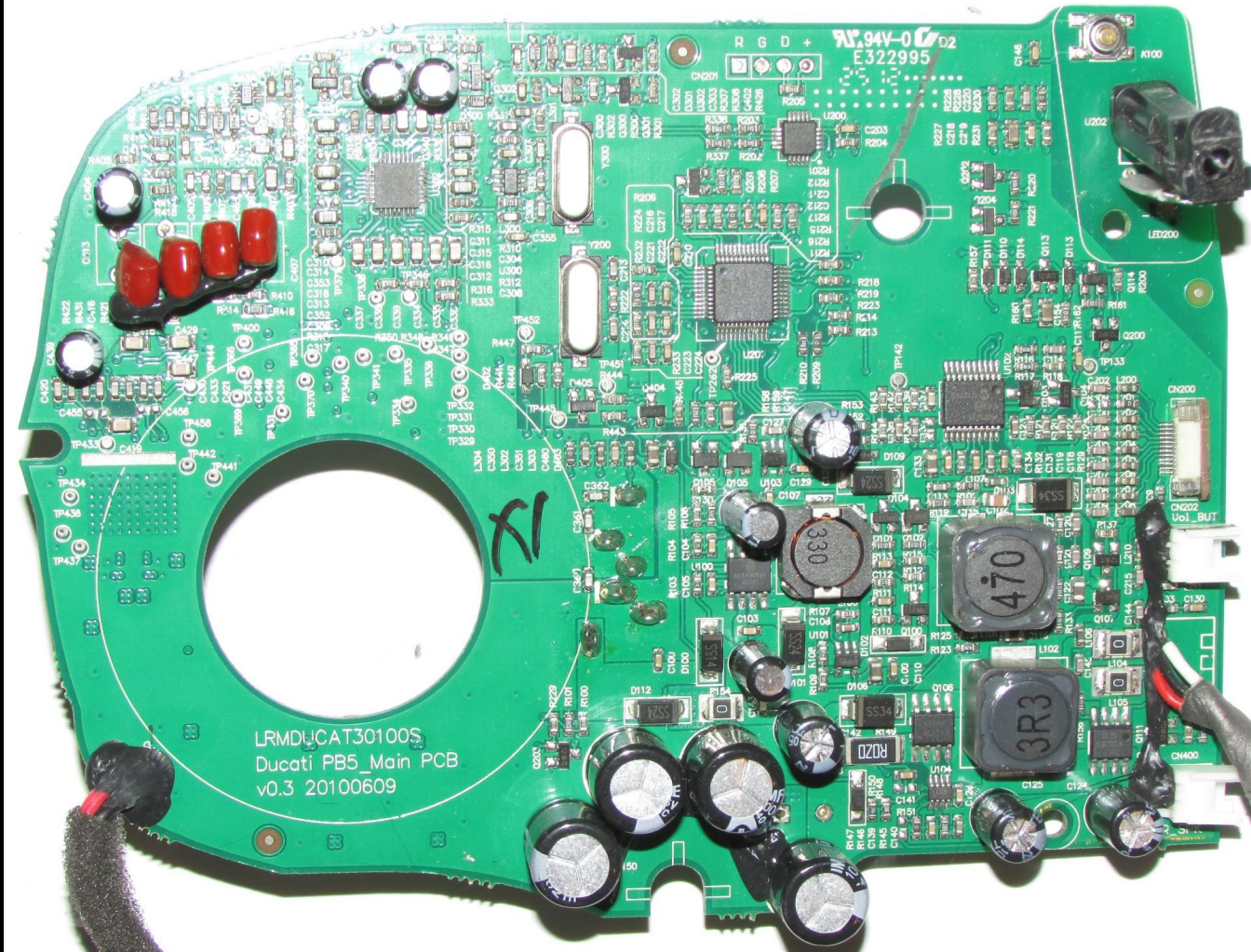


Logitech S-715i      Main Panel Full View      Date Disassembled: Unknown









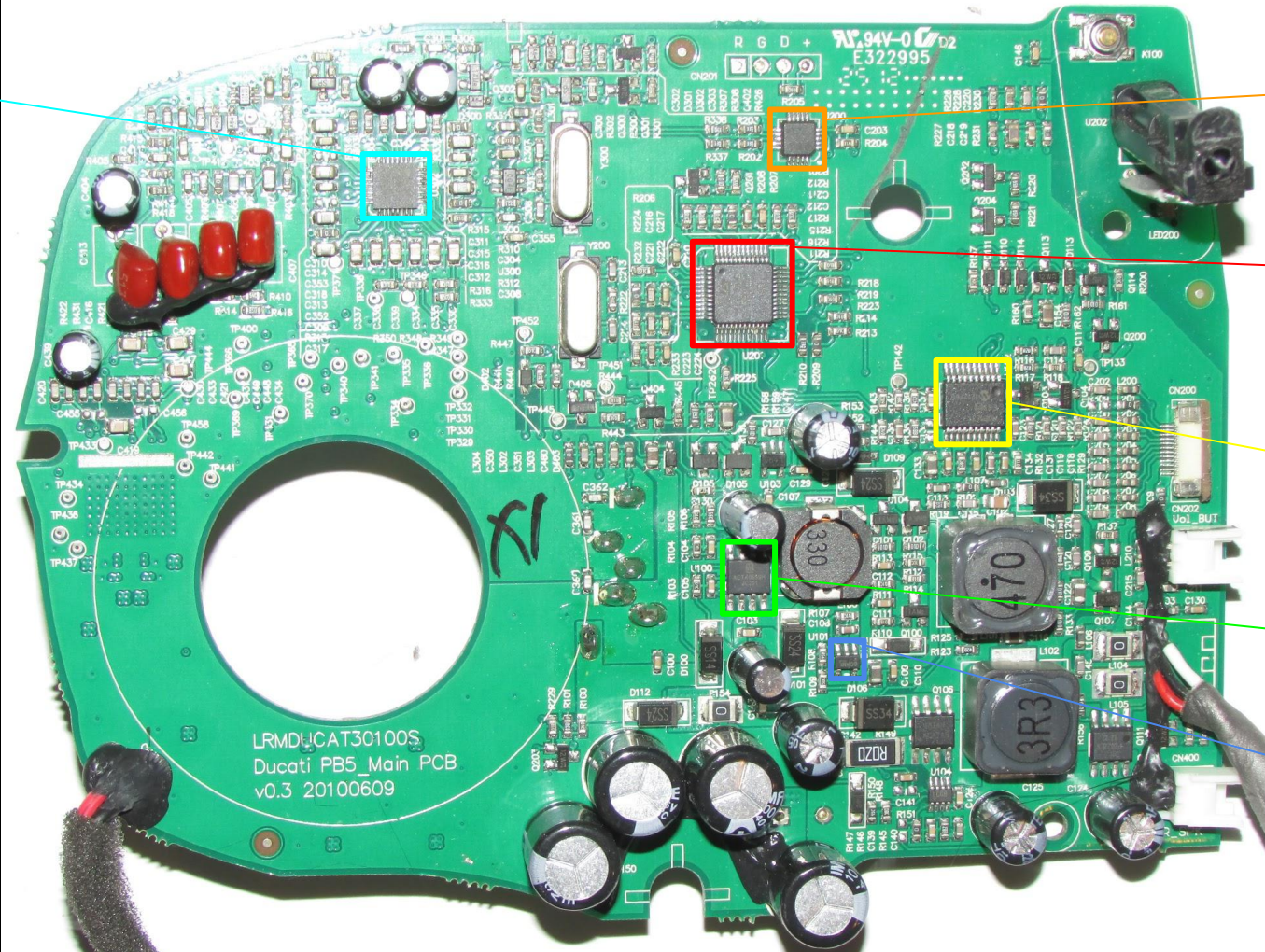
Logitech S-715i

Main PCB Side 1

Date Disassembled: Unknown



WM8978G  
Wolfson Microelectronics  
Stereo Codec With Speaker Driver



AD03773M (?)  
Unknown  
Programmable Mixed-Signal Array (?)

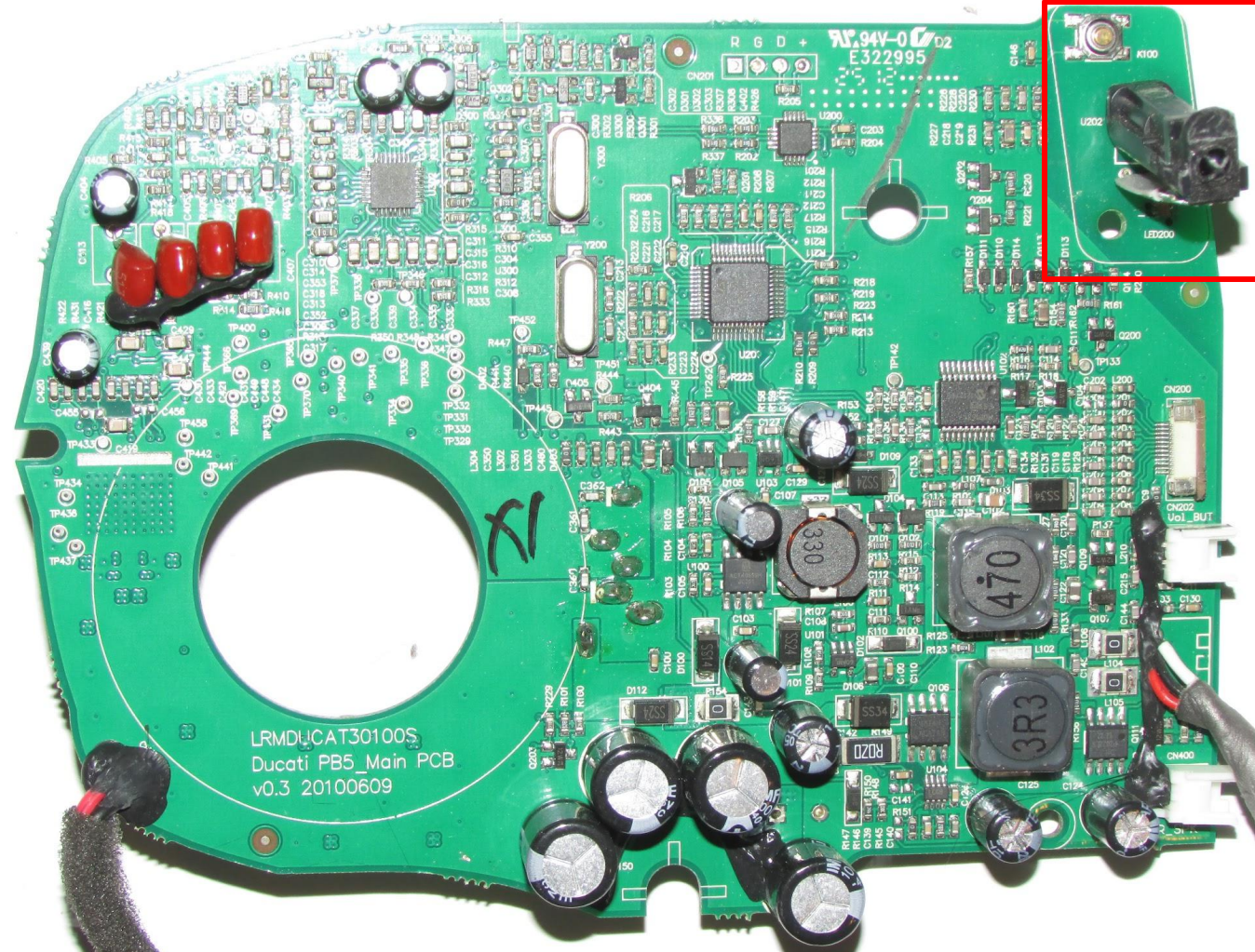
STM8L151C6  
STMicroelectronics  
Ultra-low-power 8-bit MCU with 32 Kbytes Flash, 16 MHz CPU, Integrated EEPROM

MCP1631  
Microchip Technology  
High-Speed, Pulse Width Modulator

ACT4065SH  
Active-Semi International  
High Input 2A Step Down Converter

XC6204  
Torex Semiconductor  
High Speed LDO Regulator

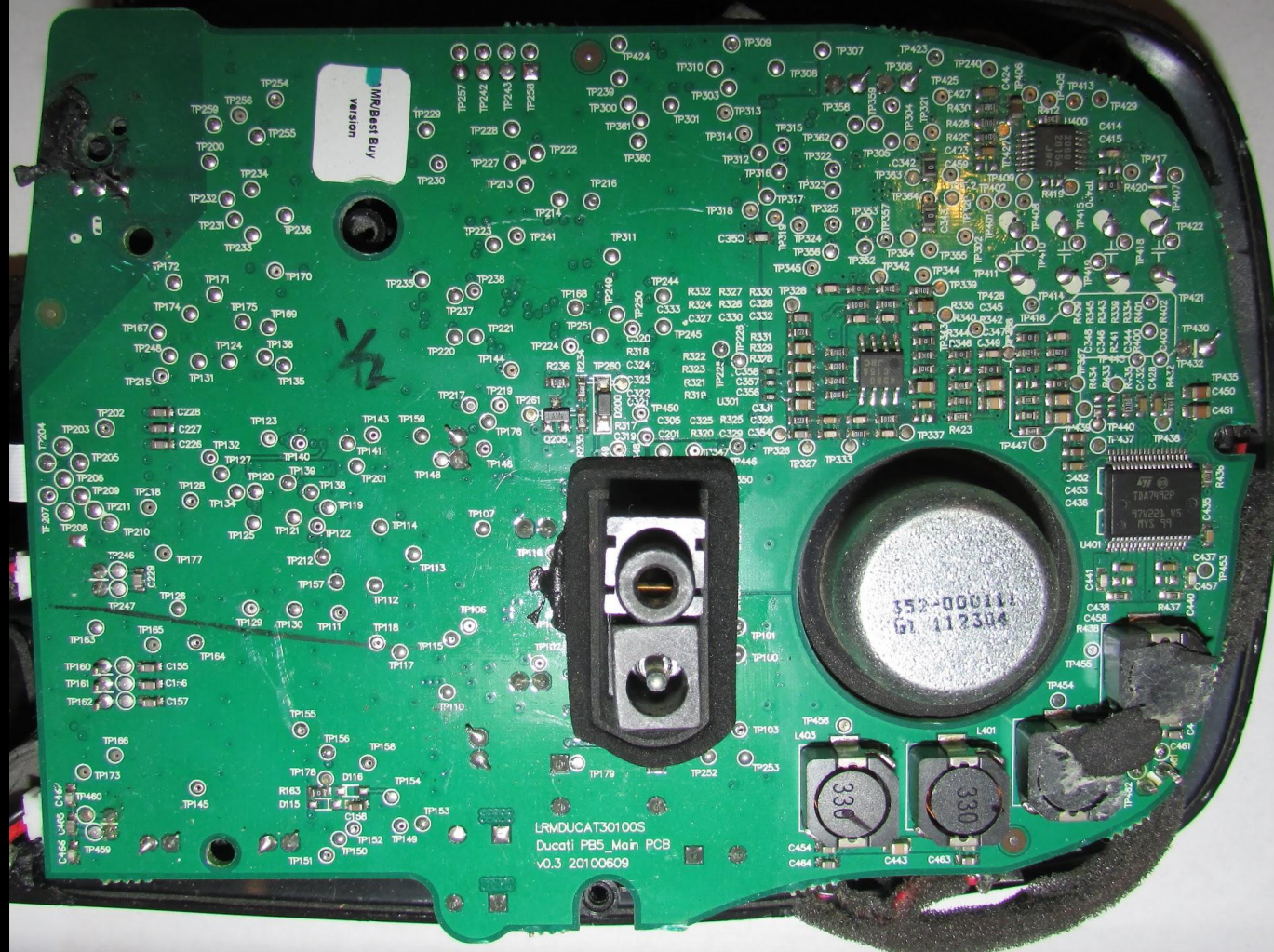




On Switch

Unknown  
Unknown  
IR Receiver



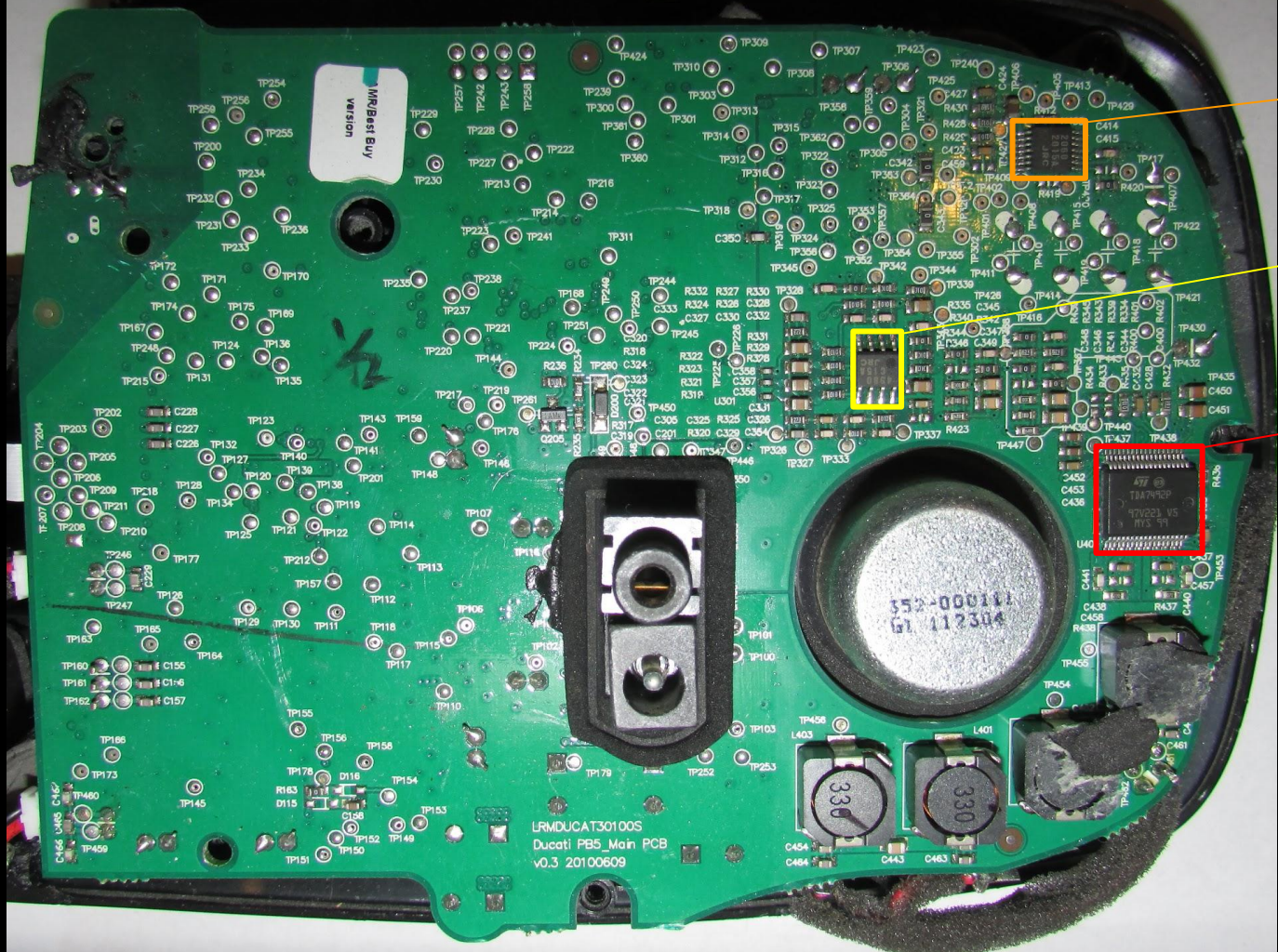


Logitech S-715i

Main PCB Side 2

Date Disassembled: Unknown



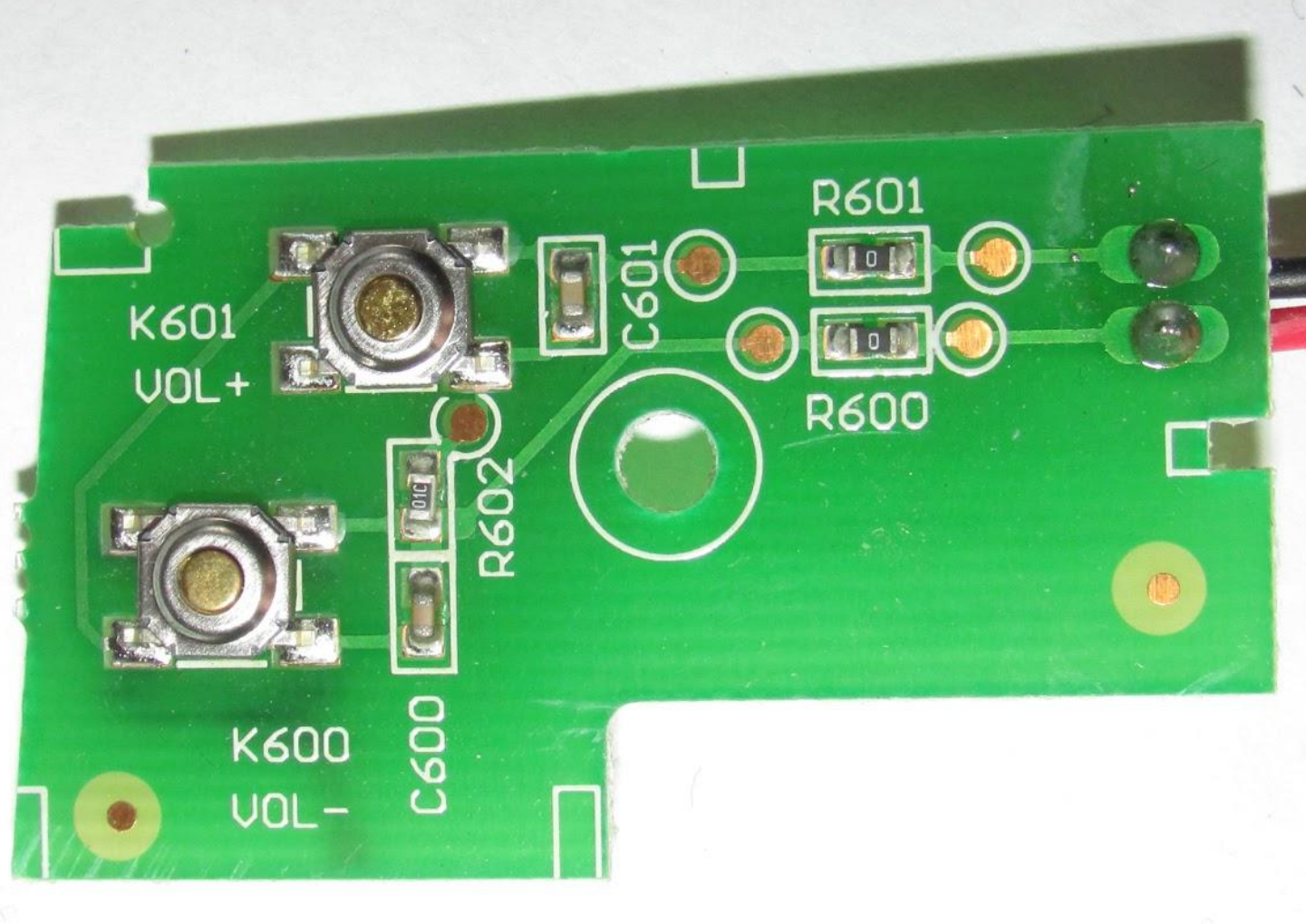


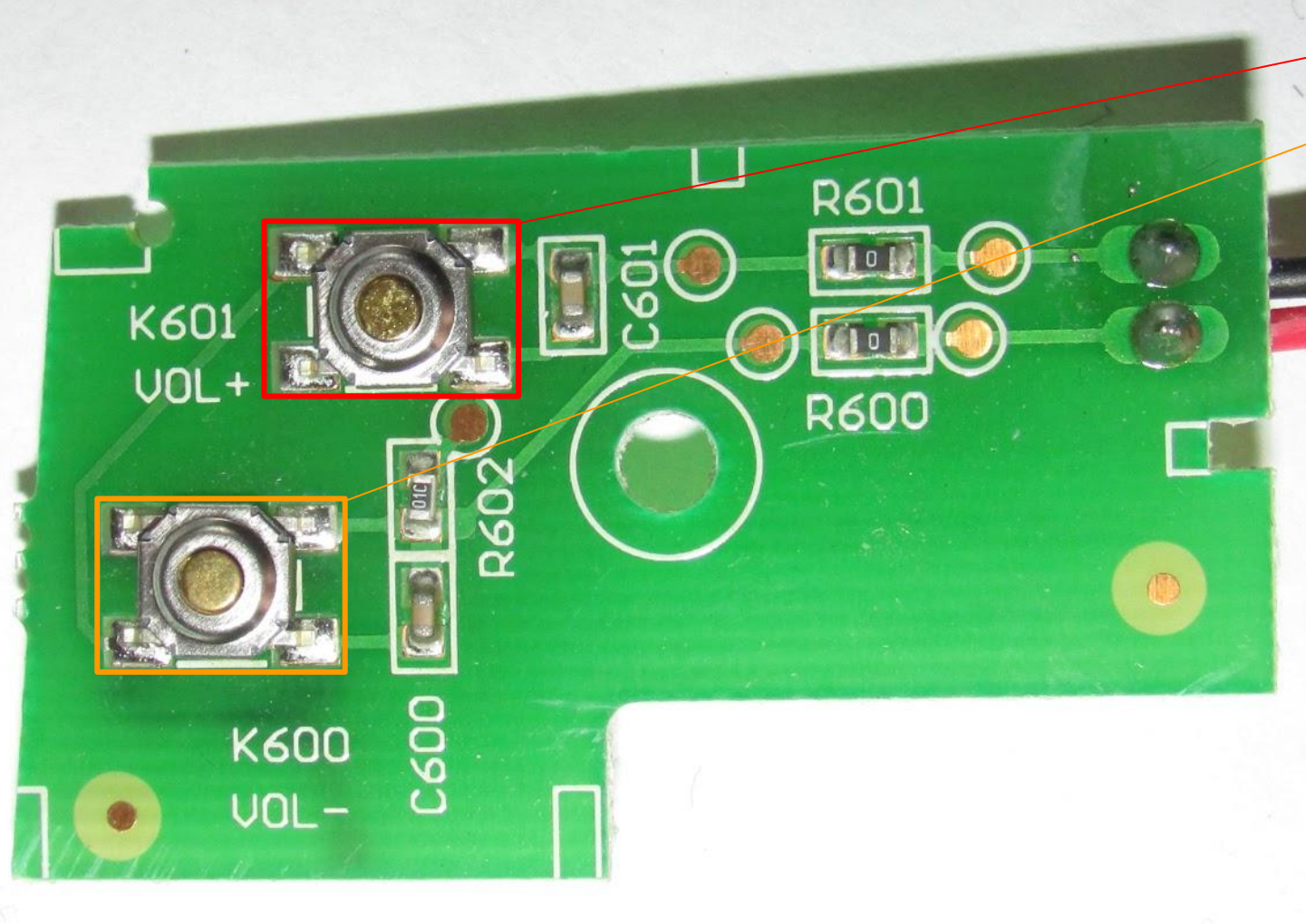
**NJM2060**  
New Japan Radio  
Quad Operational Amplifier

**NJM4580**  
New Japan Radio  
Dual Operational Amplifier

**TDA7492P**  
STMicroelectronics  
25 W + 25 W Dual BTL Class-D  
Audio Amplifier







Volume Up Switch

Volume Down Switch





CN600

GND

ADC

 94V0

 XD-102

E193079

LGKDUCAT10100S

Ducati PB3\_Button PCB

v0.1 100412

*X*



HFR-AA1800\*3  
Shenzhen Highpower Technology  
Battery Pack 3x 1800 mAh; AA Size





Logitech S-715i

Speaker Assembly Back

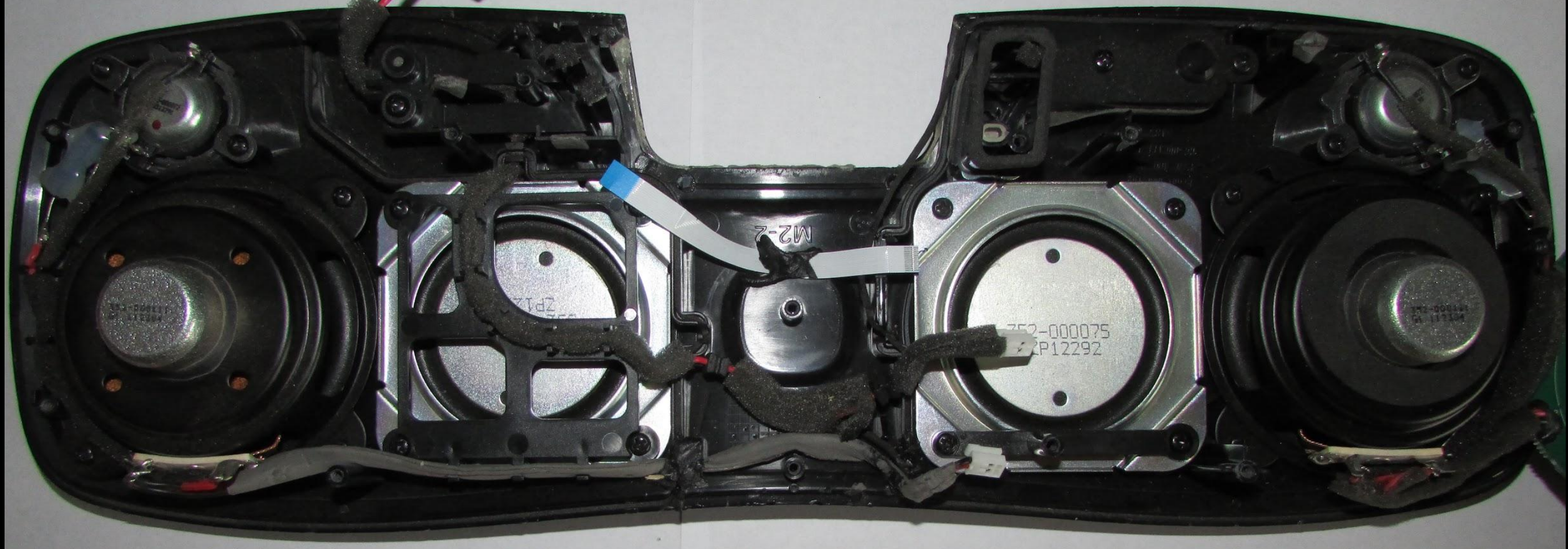
Date Disassembled: Unknown





352-000075 ZP12292 (?)  
Unknown  
Passive Radiator



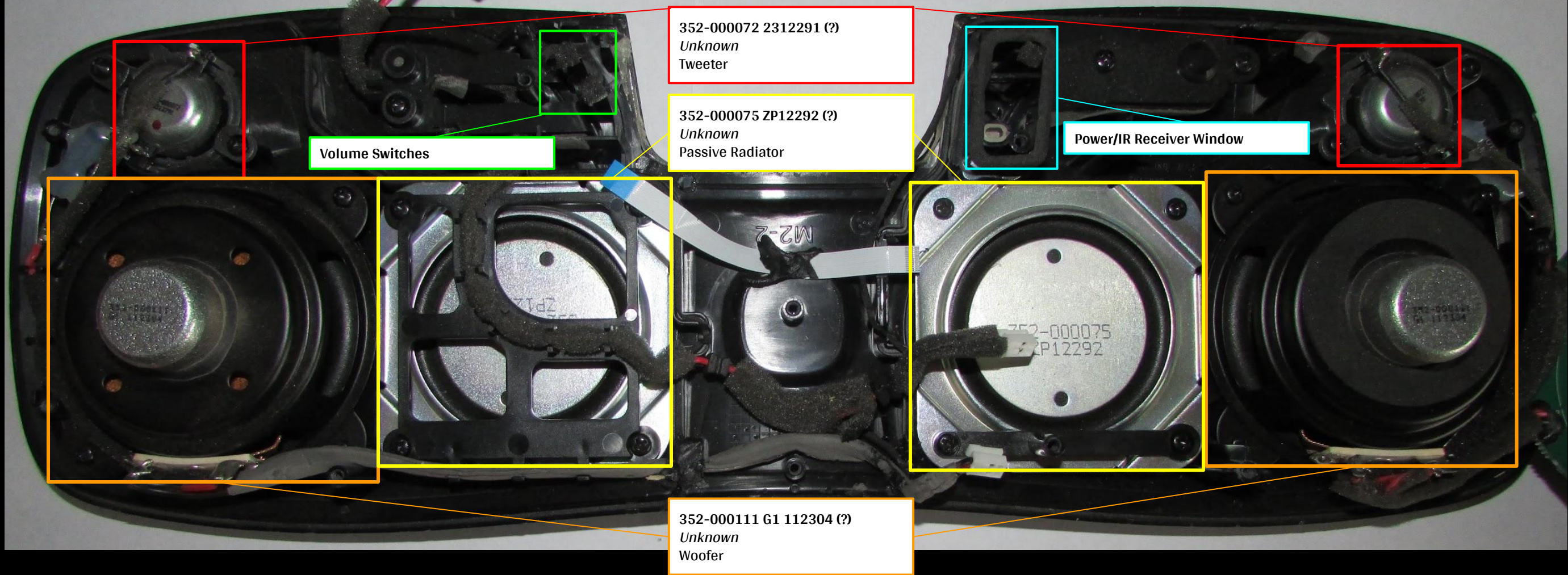


Logitech S-715i

Speaker Assembly Front

Date Disassembled: Unknown





352-000072 2312291 (?)  
*Unknown*  
Tweeter

352-000075 ZP12292 (?)  
*Unknown*  
Passive Radiator

Power/IR Receiver Window

Volume Switches

352-000111 G1 112304 (?)  
*Unknown*  
Woofers